

EIRE - Expo Italia Real Estate, Milan, June 2008



**United Nations
Economic Commission for Europe**

**AN OVERVIEW OF UNECE WORK
ON HOUSING AND LAND
MANAGEMENT**

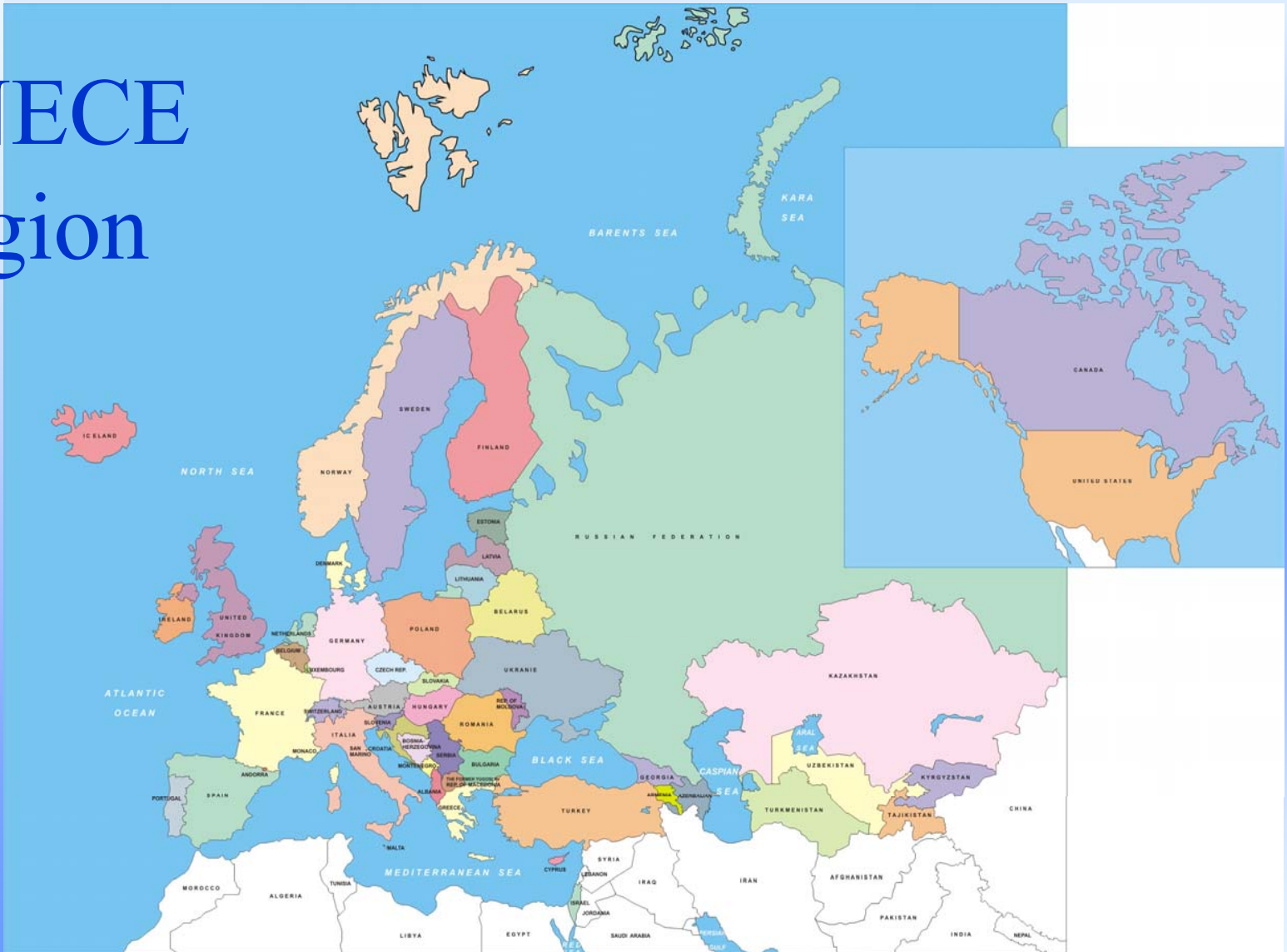
Paola Deda



UNECE

Environment, Housing and Land Management Division

UNECE Region



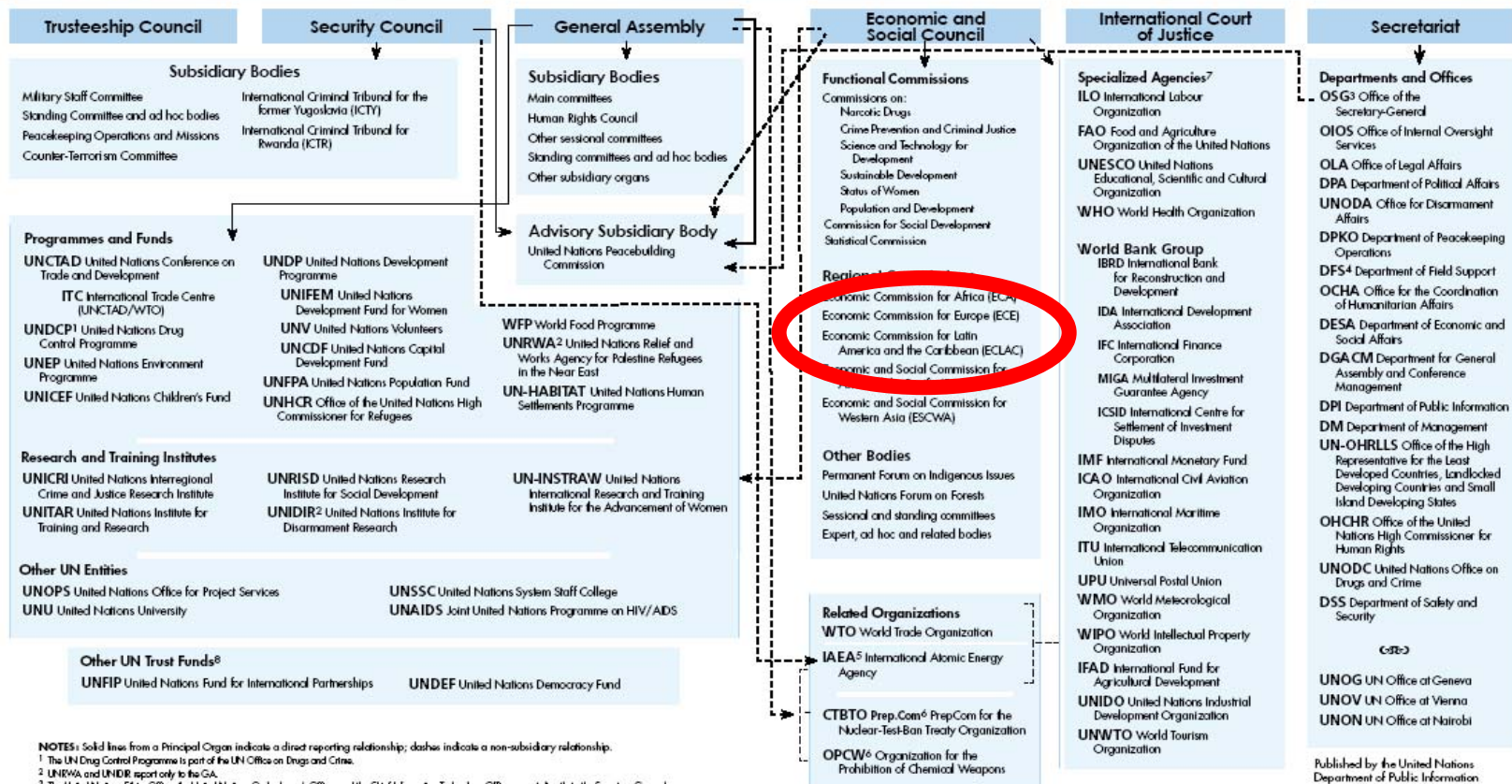
An overview of UNECE work on housing and land management

Expo Italia Real Estate, Milan, June 2008



The United Nations System

Principal Organs



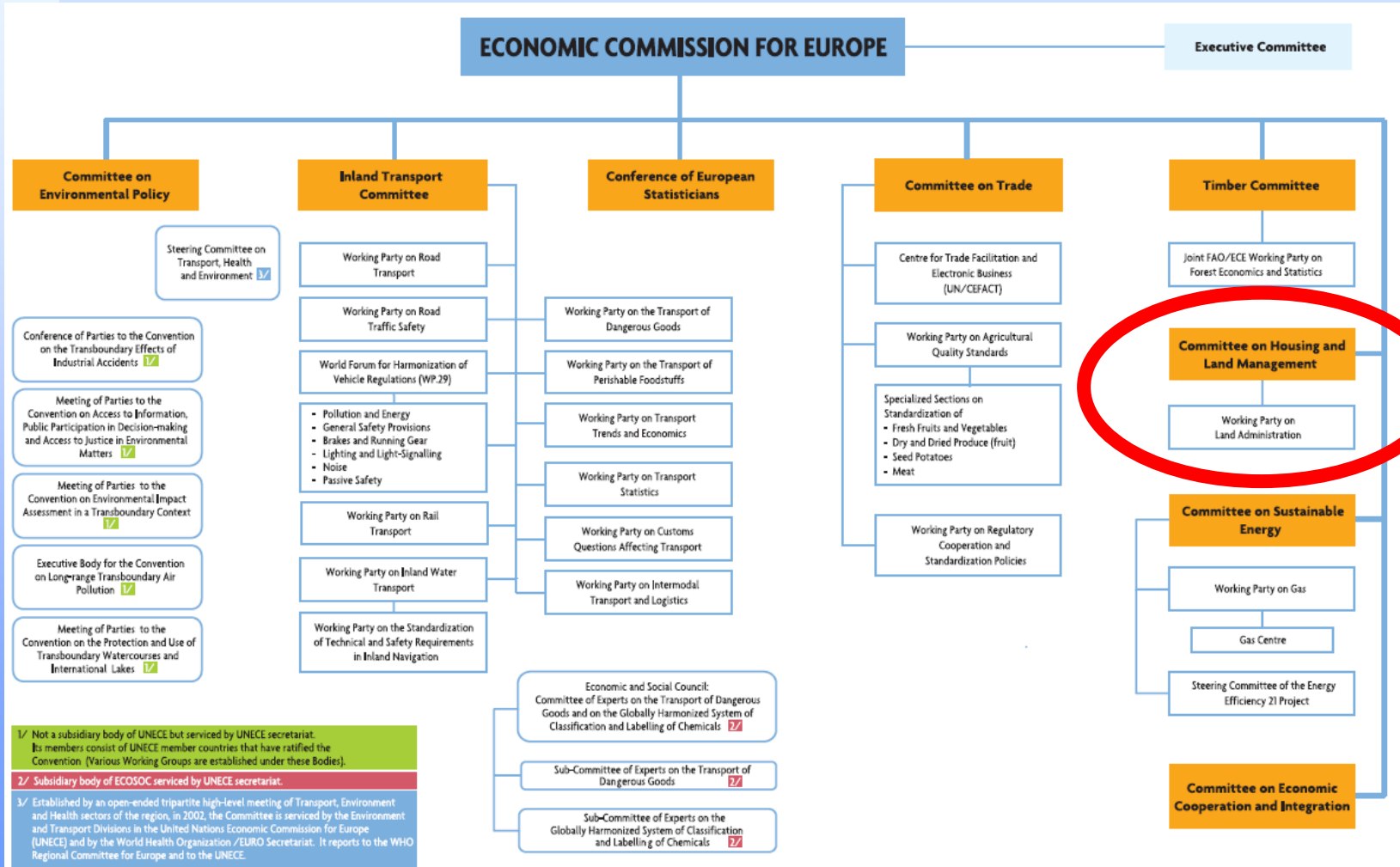
NOTES: Solid lines from a Principal Organ indicate a direct reporting relationship; dashes indicate a non-subsidiary relationship.
 1 The UN Drug Control Programme is part of the UN Office on Drugs and Crime.
 2 UNRWA and UNDIR report only to the GA.
 3 The United Nations Ethics Office, the United Nations Ombudsman's Office, and the Chief Information Technology Officer report directly to the Secretary-General.
 4 In an exceptional arrangement, the Under-Secretary-General for Field Support reports directly to the Under-Secretary-General for Peacekeeping Operations.
 5 IAEA reports to the Security Council and the General Assembly (GA).
 6 The CTBTO Prep.Com and OPCW report to the GA.
 7 Specialized agencies are autonomous organizations working with the UN and each other through the coordinating machinery of the ECOSOC at the intergovernmental level, and through the Chief Executive Board for coordination (CEB) at the intra-organizational level.
 8 UNFIP is an autonomous trust fund operating under the leadership of the United Nations Deputy Secretary-General. UNDEF's advisory board recommends funding proposals for approval by the Secretary-General.



UNECE

Environment, Housing and Land Management Division

Structure of UNECE

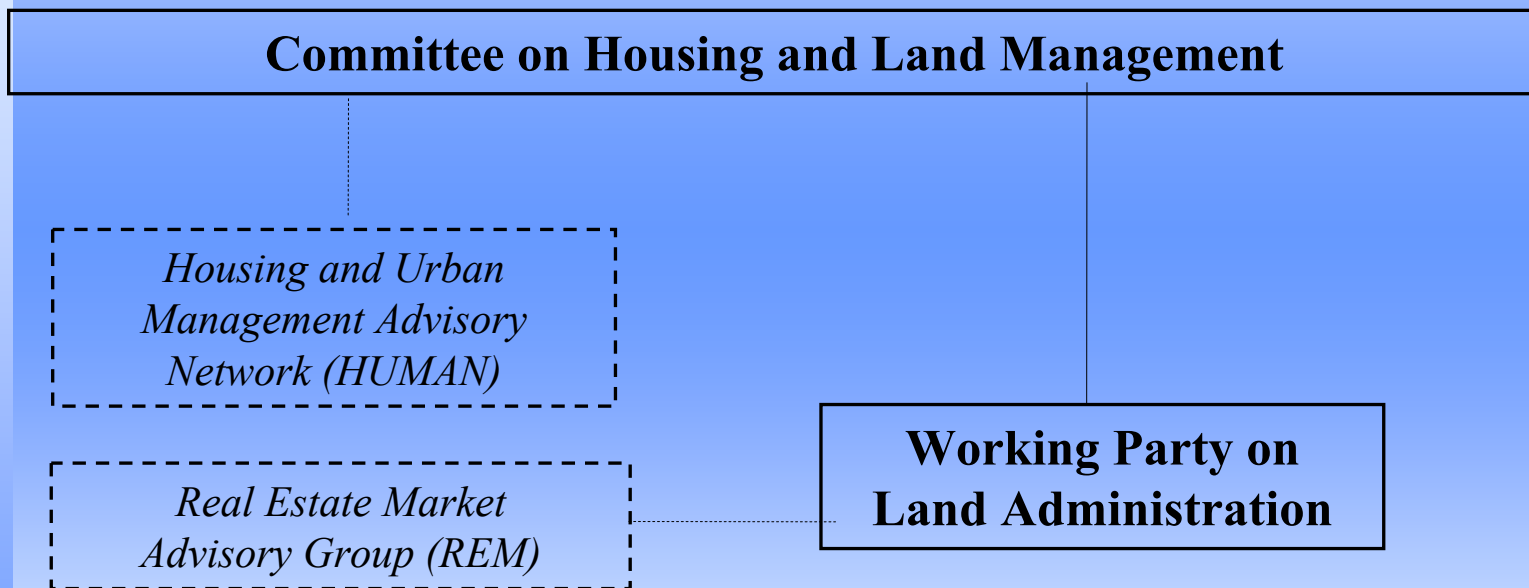




UNECE

Environment, Housing and Land Management Division

Committee on Housing and Land Management as an intergovernmental body of 56 UNECE member countries





UNECE

Environment, Housing and Land Management Division

CHLM's Programme of Work:

- **Country Profiles on the Housing Sector (Kyrgyzstan, Azerbaijan, Ukraine)**
- **Informal Settlements**
- **Workshop on housing matters**
- **Energy efficiency and energy savings**
- **Publication « Spatial Planning »**
- **Multi-family housing**
- **Housing and population**



UNECE

Environment, Housing and Land Management Division

WPLA : some current activities

- **Workshops on LA related issues**
- **Study on fees and changes**
- **Informal Settlements**
- **Electronic Conveyancing**
- **Land Administration Reviews (Bulgaria, Tajikistan, Kyrgyzstan etc.)**
- **Corruption**



UNECE

Environment, Housing and Land Management Division

Country Profiles and Land Administration Reviews

- **CPs:**
 - Review of Housing Sector
 - General Information
 - Institutional Framework
 - Housing Construction
 - Housing Maintenance
 - Spatial Planning
 - Housing Finance
- **LARs:**
 - Review of Land Administration
 - General Information
 - Legal Framework
 - Land reform and Land Management
 - Real Property Cadastre and Land Administration
 - Topographic Mapping
 - Real Property Market and Rural Land Market
 - International Cooperation



UNECE

Environment, Housing and Land Management Division

CP and LAR Kyrgyzstan





The REM group

- Members are experts from the private sector, financial institutions, NGOs, professional associations
- **Advise** WPLA on implementing policy recommendations and specific activities in member States
- **Capacity Building**, dissemination of information
- **Networking** with global and regional financial institutions, lender and donor organizations, NGOs and the business community
- Two years duration, renewable by CHLM



UNECE

Environment, Housing and Land Management Division

What's expected in the near future

- **Sound advice on proper use of real estate market for ECE countries**
- **Assist with assessment of real estate in ECE countries**
- **Contribute to work and workshops at WPLA**



UNECE

Environment, Housing and Land Management Division

Thank you!